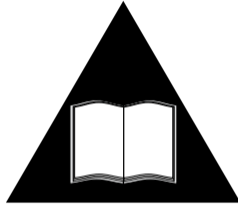


# HGT electric heater with capillary temperature regulator



**Please read the instructions  
before use.**

The heater complies with EC standards



**IP54**

## SAFETY

1. The heater should be installed by a qualified person.
2. Bathroom radiators fitted with electric heaters should be fixed not less than 60 cm from a bath, shower or wash basin, and never above a bath.
3. This equipment requires RCD protection with rated residual operating current not exceeding 30mA.
4. This equipment must be connected to circuit protective conductor (earth).
5. For the heater permanently connected (hard wire) there must be applied a cut-off device from the mains. Such a device must discon-

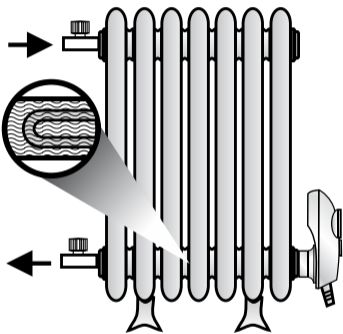
- nect the heater from the supply mains in 2 poles, with contact separation of at least 3 mm.
6. This appliance can be used by children aged from 8 years and above and persons with reduced physical, sensory or mental capabilities or lack of experience and knowledge if they have been given supervision or instruction concerning use of the appliance in a safe way and understand the hazards involved.
  7. Children shall not play with the appliance.
  8. Cleaning and user maintenance shall not be made by children without supervision.

**HGT electric heaters are designed for use in water, water/glycol filled column and aluminium radiators**  
For aluminium radiators please use a water content (instead of radiator's output)

Water content [l]		Radiator output [W]		Recommended HGT Heater		Flange
		min.	max.	HGT heater output [W]	Length of heating element [mm]	
1,5	3,0	350	350	300	340	R 1/2"
3,0	4,5	500	550	600	390	R 1/2"
4,5	7,5	700	850	900	440	R 1/2"
7,5	8,5	900	1050	1200	470	R 1/2"
8,5	10,0	1050	1300	1500	520	R 3/4"
10,0	18,0	1800	1800	2000	570	R 3/4"

## Installation and structure

### I radiator in CH system



### I radiator in CH system

Open valves and vent the radiator.

Next close inlet valve  
(*thermostatic controller*).

**Caution!** Only one valve must be closed.

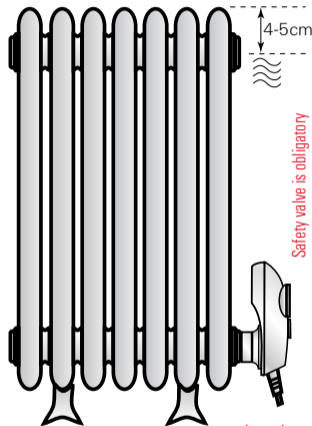
### II electric radiator

It is recommended to fill the radiator only up to 95% of its capacity (*leave 4-5cm of air in the manifold*), taking into account thermal expansion of water.

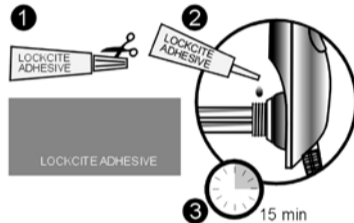
Check the capacity in the instruction manual of the radiator manufacturer.

**Check that the radiator is watertight after filling.**

### II electric radiator



Because of the shape of HGT heater casing, with some aluminium and brass radiators it may be necessary to use a spacer bush to permit the heater to be turned fully into position.

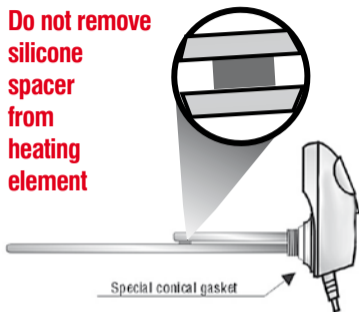


Before inserting the HGT heater into the radiator, a small amount of Loctite Adhesive (*included*) should be smeared over half of the circumference of the thread. **DO NOT put Loctite on the conical gasket, AVOID CONTACT WITH THE SKIN.**

The Loctite adhesive bonds within 15 min.

## Installation and structure

**Do not remove silicone spacer from heating element**

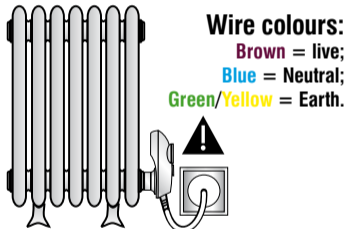


After placing the adhesive on the thread the HGT heater should be firmly screwed into the radiator by hand.

No special tools are required.

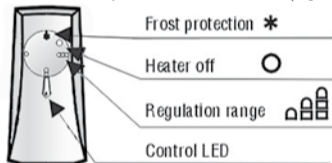
The special conical gasket fitted to the 1/2" or 3/4" connection of the heater enables the heater to be screwed into the radiator until the control box is vertical.

**Electrical installation in a bathroom should be entrusted to a qualified electrician for hard wiring in compliance with UK electrical regulations. This equipment requires RCD protection with rated residual operating current not exceeding 30mA.**



**Connect the heater to the mains 230V.**

The HGT heater is switched on by turning the control knob clockwise, and the LED on the casing will light up. The star shaped position on the control knob is for frost protection (approx. 10°C). The range of temperature regulation is from 20°C to 65°C ( $\pm 5^\circ\text{C}$ ). The heater is turned off by turning the control knob as far as possible anticlockwise (Fig. 1)



### Maintenance:

The HGT heater **MUST BE DISCONNECTED** before cleaning the casing. The casing may be cleaned using a soft cleaning agent on a damp cloth.

### AVOID SOAKING THE CASING.

The heating element must be fully immersed. The radiator should be fully purged of air

## GUARANTEE TERMS:

Guarantee is granted by manufacturer for 24 months period starting from date of sale, but no longer than 36 months from date of the heater manufacture. Defects revealed within this period, resulting from a fault of manufacturer will be repaired free of charge or the item replaced with new, equivalent one. Term of complaints' investigation up to 14 (fourteen) days from date of submission to the manufacturer.

### Guarantee does not cover:

1. Using of product in a manner incompliant with attached instructions.
2. Any visible damage to the heating element or controller due to improper use.

Damaging of manufacturer's seals makes the guarantee null and void.

## Guarantee conditions and card



Mników 322, 32-084 Morawica  
tel.12.423.6065, 12.656.4491  
www.heatpol.com

### GUARANTEE CARD

Electric heater with electronic  
temperature controller, type: HGT .....

Serial No.: .....

Date of sale: .....

Stamp of retail outlet, signature of seller

#### Caution:

The guarantee card should be legibly filled in retail outlet.  
Any corrections on the guarantee card will invalidate the guarantee.  
Guarantee card valid only with proof of purchase.

In the event that Heatpol are unable to repair  
or replace this product we reserve the right  
to refund the purchase price as an alternative

#### Notes:

1. The condition of proper, long-term  
heater operation is complete immersion  
of heating element in water.
2. It is recommended to entrust  
the heater installation and first starting  
to **qualified technician**.
3. In case the radiator installed in CH system  
is fitted with two valves, it must not be  
closed both at supply and return side  
(thermal expansion of water).
4. Disconnect the power supply in case  
malfunction is found.
5. Electric power cable is not replaceable.  
Y type connection. If the electric cable is  
damaged the heater must be returned  
to the manufacturer for repair.
6. If heater doesn't work at any position  
of a knob please return it to a sale point.

### Caution:

To avoid the risk of fire or electric shock  
the heater casing should be protected  
from water spray or flooding.

This appliance is not intended  
for use by persons (including children)  
of limited physical, sensory or mental  
abilities, or persons inexperienced  
or not familiar with the appliance,  
unless supervised or instructed  
on the appliance use by persons  
responsible for their safety.  
Particular attention should be paid  
to children, to preclude playing  
with the appliance by them.



exclamation mark  
on triangular field signals  
information important  
for the user



lightning mark ended with  
arrow on triangular field warns  
about dangerous voltage  
inside the appliance

### CAUTION

### electric shock hazard

#### Note:

in order to reduce electric shock hazard,  
do not remove the casing  
(nor its rear cover).  
  
There are no user-serviceable parts inside  
the appliance; the product should be returned  
to manufacturer to have it repaired,  
via product purchase point.

### REFER TO LABELS ON ENCLOSURE



Do not throw the used  
appliance in the waste bin.  
Take it to  
a recycling facility.